

7th Sense - Developing Your Intuition - Listening To Your Body + Pineal Gland (Week 10)



Welcome to one of the most transformative weeks in your intuition journey! We're bridging the mystical and the measurable—exploring how your body is not just a vessel for your consciousness, but the primary instrument through which intuition speaks.

Most people spend years ignoring their body's signals (!) then wonder why they feel disconnected from their inner knowing.

The truth is simple: you don't need more intuition. You need less noise.

Intuition as Sensation: The Body Knows First

Intuition usually shows up as a physical sensation first—a tightening in your chest, warmth spreading through your belly, heaviness in your shoulders, or a calm "yes" that settles through your entire being.

DON'T IGNORE THOSE.

Most people have been trained to ignore these signals for so long that they've forgotten how to read them.

Over the past weeks, you've been training intuition like a skill: defining it as a calm inner signal rather than a fear alarm, tracking it through journaling, practicing "yes/no" body cues, and learning to enter receptive brain states. You've cleared distortion from fear and bias, and built the discipline of receiving insight first, then verifying it responsibly in real life.

Today's Two Big Goals

1. Learn to distinguish between intuition and anxiety in the body
2. Explore the pineal gland and "third eye" with both scientific fact and esoteric wisdom

We're doing this with discernment—so nobody feels preached at, and nobody feels gaslit. Your audience already knows the world is loud, trust is low, and people are hungry for truth.



Everything Is Energy: Einstein and Frequency Explained

Demystifying vibration and frequency again (since it's so important), from common misconceptions to their scientific and energetic dimensions.

Frequency: Measurable Rhythms

In physics, frequency is a quantifiable measure: the number of cycles per second, expressed in Hertz (Hz). This foundational concept applies to everything from light waves to sound waves, providing a precise way to describe rhythmic phenomena.

📌 **Key Takeaway:** Scientific frequency refers to observable, quantifiable rhythms and cycles.

Einstein's Mass-Energy Equivalence

Einstein's famous equation, $E = mc^2$, is a *scientific principle*. It posits that mass and energy are interchangeable forms of the same fundamental reality.

A tiny amount of mass can convert into immense energy, as seen in nuclear reactions.

Mass and energy are "different manifestations of the same thing."

The "Everything is Energy" Myth vs. Reality

The popular quote, "*Everything is energy... match the frequency of the reality you want*," is often attributed to Einstein, but quote investigators trace it to other sources. It's important to distinguish:

Energetic "Frequency"

Describes the state of our nervous system: our coherence, regulation, and clarity. This is often what's meant in spiritual or self-help contexts.

Scientific "Frequency"

Refers to measurable rhythms like brainwaves or electromagnetic waves. These are observable and quantifiable phenomena.

By understanding both, we bridge worlds, integrating scientific fact with broader energetic concepts.

The Emotional Vibrational Frequency Chart

The emotional frequency chart—with numbers like Shame at 20, Fear at 100, Courage at 200, and Love at 500—comes from David R. Hawkins, popularized in his 1995 book "Power vs. Force." He proposed a "Map of Consciousness" calibrated on a 1-1000 scale using applied kinesiology and muscle testing.

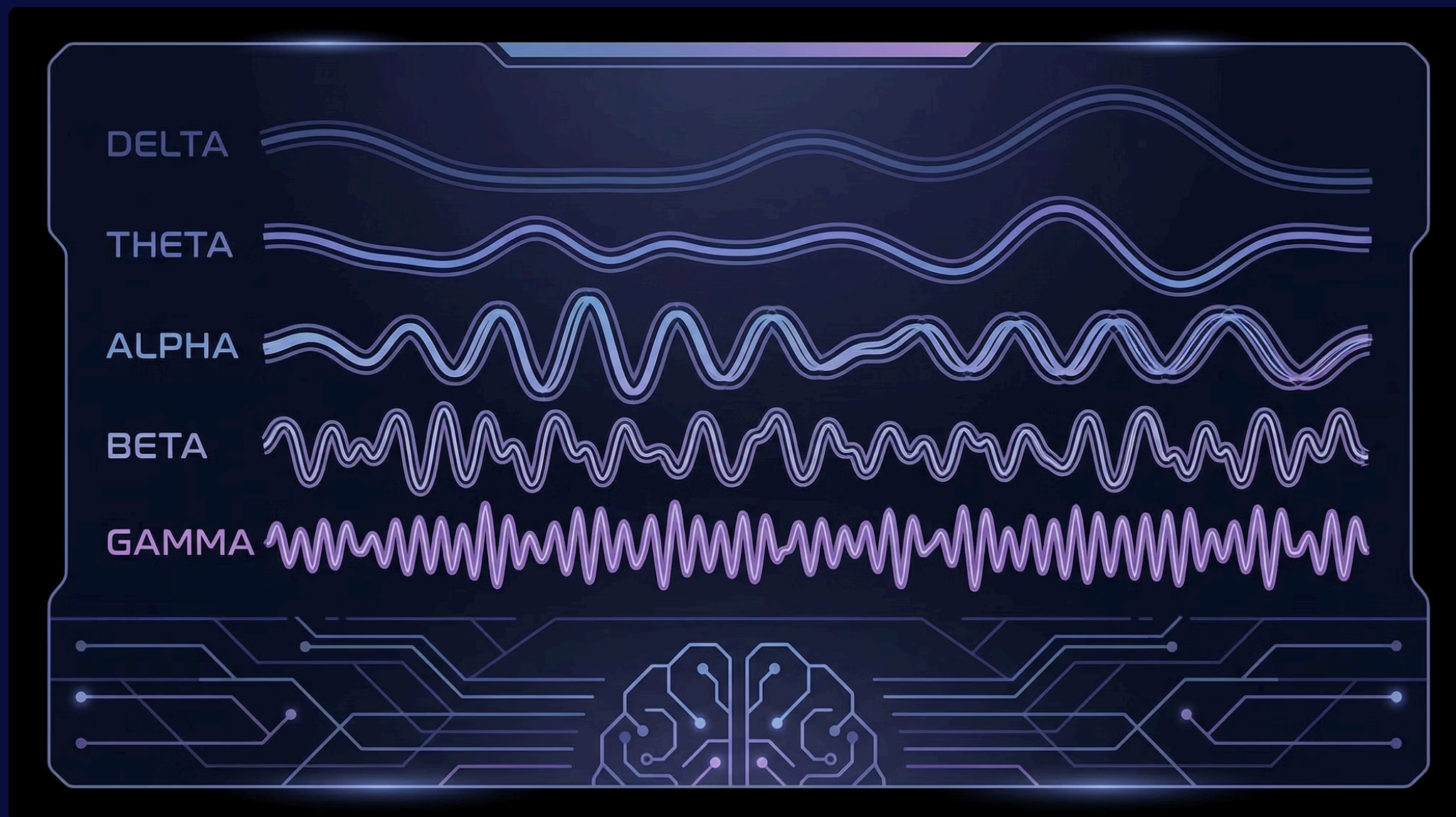
As a spiritual framework, it's a useful heuristic for discussing emotional states and their consequences. As science, it's not accepted as rigorous measurement.

I'm presenting it as a mirror. Certain emotional states collapse your life force; other states expand your perception. Use it for self-reflection, not self-judgment.



The Complete Brainwave Spectrum

Your brain operates at different electrical frequencies depending on your state of consciousness, measured through EEG rhythms. Understanding these brainwave states is crucial because what state you're in affects what you can perceive. These aren't "good" or "bad"—they're simply modes, each serving different functions.



Delta (0.5-4 Hz)

Deep sleep, restoration, physical healing. Your body regenerates here.

Theta (4-8 Hz)

Drowsiness, meditation, hypnagogia, memory processing. The "inner cinema" opens.

Alpha (8-12 Hz)

Relaxed wakefulness, calm focus—the "bridge" state between conscious and subconscious.

Beta (13-30 Hz)

Alertness, problem-solving, task focus. Also increases with stress and anxiety.

Gamma (30+ Hz)

High-level integration, binding, complex processing. The "aha" moment frequency.

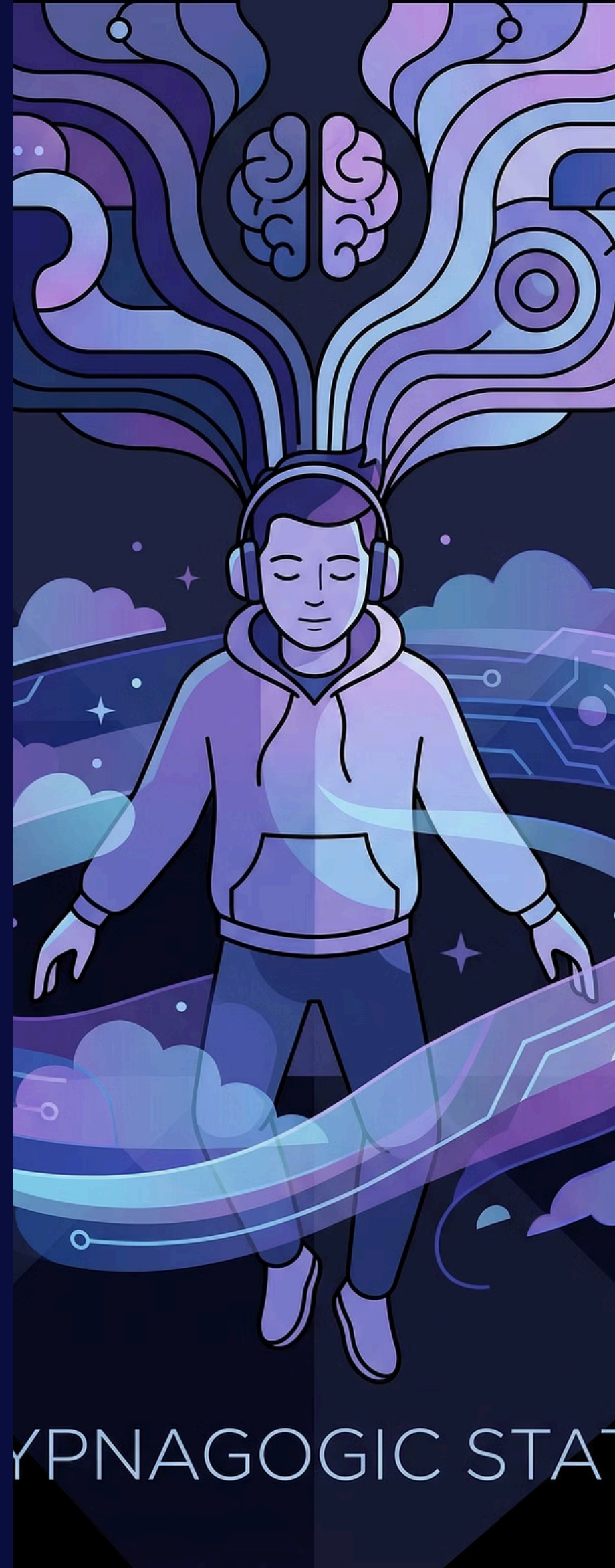
You need beta to run your life and handle tasks. But too much beta, chronically? That's an "overclocked mind," and subtle intuition gets completely drowned out. The key is learning to shift between states intentionally.

Theta: Where Your Inner Cinema Opens

Why is theta the "images and symbols" band? Because theta is prominent in hypnagogia—that magical transition zone between waking and sleep where imagery and sensory-like perceptions naturally arise. In this state, your brain loosens its tight grip on linear narrative and allows associative, symbolic, memory-integrative content to surface.

Think of theta as where your unconscious mind gets to speak in its native language: images, metaphors, feelings, and symbols. This is why many profound insights come during meditation, just before sleep, or in the shower—you've temporarily slipped out of the beta-driven task-orientation and into a more receptive state.

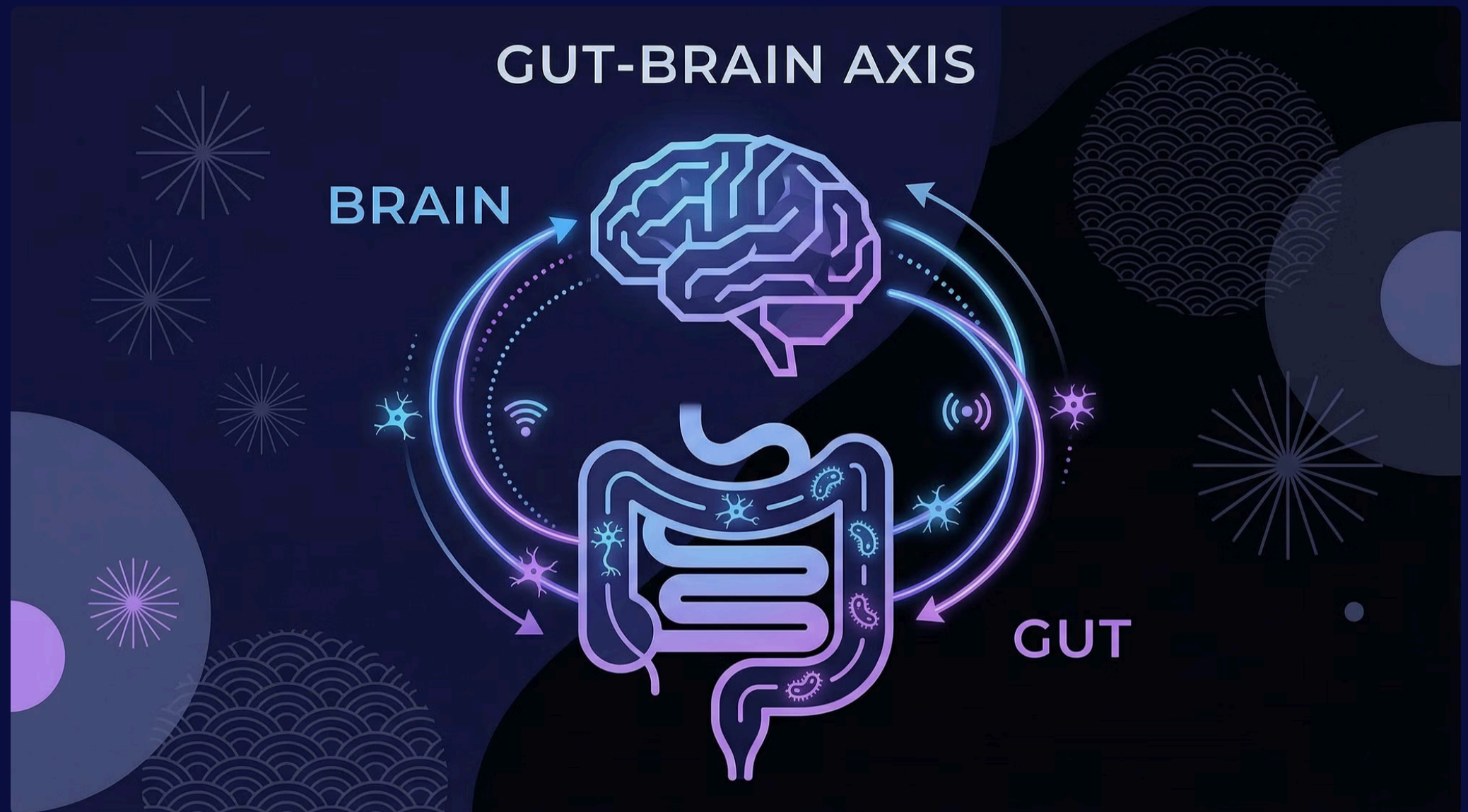
And gamma? Gamma is often associated with integration—the "click" moment where scattered inputs suddenly cohere into a unified insight. A landmark study showed that long-term meditators can self-induce sustained high-amplitude gamma synchrony during meditation. So here's your power phrase: Theta receives. Gamma organizes. Together, they're the neurological foundation of intuitive knowing.



YPNAGOGIC STA

Gut Instinct: Ancient Wisdom Meets Modern Science

When we say "I felt it in my gut," we're echoing something ancient and widespread across cultures. Ancient peoples weren't vague about this—they were somatic philosophers who mapped specific emotional and intuitive knowledge to different body regions.



Ancient Egypt

Egyptians viewed the heart (ib) as the center of wisdom, memory, and emotion—famously dramatized in the Weighing of the Heart ceremony where the heart was weighed against Ma'at's feather of truth.



Ancient Hebrew Tradition

In biblical-era metaphor, kidneys were associated with deep inner stirrings and emotions alongside the heart. The Old Testament links kidneys to "the most inner stirrings of emotional life."



Mesopotamia

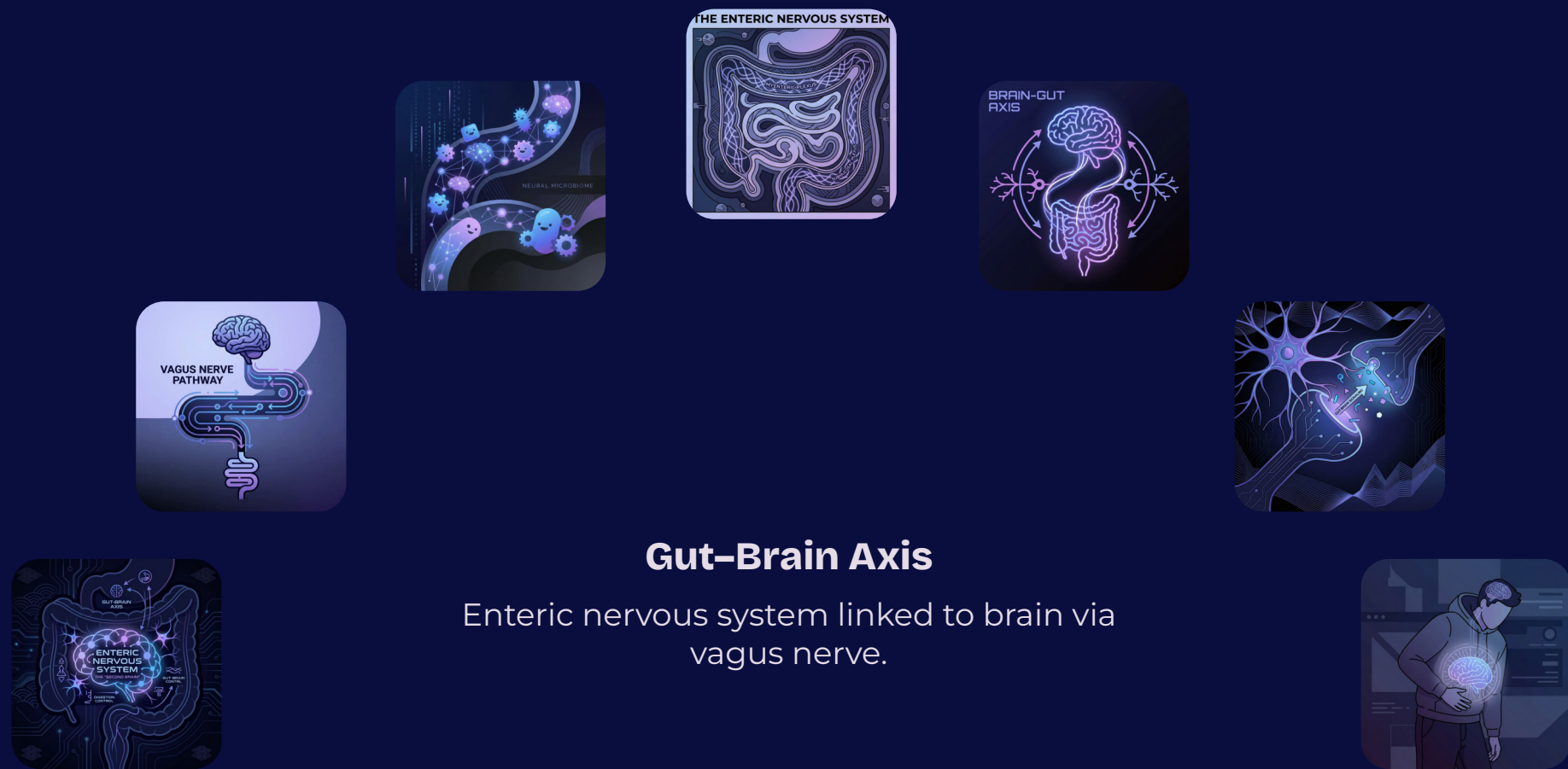
Akkadian, Assyrian, and Babylonian thought located aspects of self and emotion in the abdominal area. The term "libbu" could mean heart, inner self, or abdomen depending on context—all tied to thought and feeling.



Homeric Greek

Homer used "thumos" for the human capacity to feel and think—often translated as "heart" or "spirit," representing the seat of emotional and mental life.

The Gut-Brain Connection: Your Second Brain



This diagram visually represents the complex bidirectional communication pathway between the gut and the brain, highlighting the enteric nervous system and the crucial role of the vagus nerve.

Modern science has caught up to what ancient cultures knew intuitively. Your gastrointestinal tract contains the enteric nervous system—sometimes called your "second brain"—and communicates constantly with your brain via the vagus nerve and biochemical signaling pathways. The vagus nerve is a critical superhighway for gut-to-brain information, influencing digestion, immune responses, reward processing, memory, and cognition.

This means "gut instinct" isn't magic—it's your body's sophisticated pattern recognition system combined with interoceptive signaling arriving as sensation. Your gut detects patterns, chemical shifts, and environmental cues faster than your conscious mind can articulate them into words. By the time you "feel" something in your gut, your body has already processed volumes of information below conscious awareness.

What Your Gut Tracks

- Emotional patterns from past experiences
- Chemical/hormonal shifts in real-time
- Threat signals and safety cues
- Social dynamics and trust indicators
- Environmental changes before conscious awareness

Remember: Your gut doesn't predict the future. It detects patterns faster than your conscious mind can explain.

The Pineal Gland and the Third Eye

Now we enter one of the most fascinating intersections of biology and spirituality. Let's explore this with both scientific precision and respect for esoteric traditions, because both perspectives offer valuable insights.



The Biology (Fact)

The pineal gland is a small endocrine organ in your brain that helps regulate melatonin production and circadian rhythm—your sleep timing, hormonal rhythm, and restoration cycles. It responds to light and darkness, acting as your body's internal clock. This tiny pine-cone-shaped gland (hence its name) has profound effects on your sleep quality, mood regulation, and overall nervous system balance.

The Ajna Chakra (Ancient Tradition)

Ajna—the "third eye" chakra—comes from Indian yogic and tantric traditions. In the Sat-Chakra-Nirupana, a key text codifying the chakra system, Ajna is described as the lotus "between the eyebrows," symbolizing perception, discernment, and inner sight. The chakras aren't physical organs—they're a psychospiritual map of consciousness and energy flow.

Modern writers later linked Ajna to the pineal gland as a symbolic and physiological bridge between ancient wisdom and contemporary anatomy. While this connection isn't found in the original Sanskrit texts, it serves as a powerful metaphor for how inner perception and biological function interweave.

Sacred Eye Symbolism: Mesopotamia's Contribution



We don't have clear evidence that Sumerians taught a chakra-like "third eye" system the way Indian traditions do. However, Mesopotamia offers us something equally fascinating: intense eye symbolism tied to divine presence and devotion.

The most striking examples are the Eye Idols of Tell Brak in Northeastern Syria, dating to approximately 3500-3300 BCE. These votive objects, found in what's been called the "Eye Temple," were possibly associated with an "eye god" and represented divine watchfulness, protection, and devotional presence.

So here's the clean distinction: India gives us the third eye as an inner perception center—a tool for seeing beyond physical reality. Mesopotamia gives us the sacred eye as divine gaze—representing watchfulness, protection, and the ever-present awareness of the divine. Both traditions understood that "seeing" extends beyond physical sight.

Pineal Calcification and Fluoride: What We Actually Know

Let's address this topic with evidence-based clarity. Here's what peer-reviewed research actually shows about pineal calcification and fluoride accumulation... but remember, the Ancients knew better.



Pineal Calcification Is Common

A systematic review and meta-analysis estimates a pooled prevalence of pineal calcification around 62%, though this varies by study methodology and population. This is commonly observed and increases with age.

Fluoride Can Accumulate

Published analyses document fluoride presence in human pineal tissue, including cadaver-based studies. Fluoride does accumulate in the pineal gland more than in other soft tissues.

What We Don't Have

We don't yet have strong clinical trials proving that "decalcifying the pineal gland" reliably increases intuition or psychic ability (though I can attest it works). We have enough evidence about pineal mineralization and melatonin vulnerability to justify protective protocols.

Even if the metaphysics are debated, the physiology is not. Pineal function tracks your light environment and your sleep rhythm. Supporting your pineal gland through good sleep hygiene, darkness at night, and circadian discipline is a no-regrets strategy that benefits your entire nervous system regardless of your beliefs about the third eye.

EMF, Wi-Fi, and Melatonin: The Evidence Timeline



Historical Timeline

Interest in EMF effects on pineal function began with animal studies in the 1980s, where melatonin suppression and phase shifting was observed in rats exposed to 60 Hz electric fields (Wilson et al., 1980). A well-cited 1993 review by Reiter discussed reports that non-visible electromagnetic fields at night may depress the conversion of serotonin to melatonin in the pineal gland.

The Current Evidence State

Evidence is strong that light at night—especially blue-rich light—suppresses melatonin and shifts circadian rhythm. This is well-established and not debated. Evidence about EMF/RF exposure (Wi-Fi, cell signals) and melatonin or sleep quality is mixed. Some studies show effects, some don't, methodologies vary widely, and exposure conditions matter significantly.

So what do we do? We don't argue ideology—we run personal experiments with no-regrets protocols that respect both caution and practicality.

01

Bedroom: Dark, Cool, Quiet

Create a true sleep sanctuary with blackout conditions and temperature around 65-68°F.

02

Devices on Airplane Mode

Keep devices out of the bedroom or switch to airplane mode during sleep hours.

03

Screen Curfew

Turn off screens 60-90 minutes before sleep, or at minimum use dim, warm-toned settings.

04

Morning Light Exposure

Get natural sunlight within 30 minutes of waking to anchor your circadian rhythm.

Survival Mode: When Your Nervous System Hijacks Intuition

Understanding survival mode is crucial right now, especially in February 2026 when collective stress is running extraordinarily high. Let's trace the science, then look at why this moment in history perfectly illustrates the problem.



The Science History

Walter Bradford Cannon described the "fight or flight" emergency response around 1914-1915, linking it to sympathetic nervous system activation. Later, Hans Selye developed the "General Adaptation Syndrome" stress model in the mid-20th century, outlining the progression: alarm → resistance → exhaustion. This work laid the foundation for understanding chronic stress effects.

Right now is a perfect case study. On February 13, 2026, student walkouts and protests around ICE enforcement were reported in NYC alone—people are living inside a constant stress signal. Add economic narrative whiplash with rate debates, inflation concerns, and ongoing uncertainty, and you have the perfect nervous-system storm. When your body thinks you're unsafe, it won't spend energy on nuance. That's the core teaching: survival mode and intuitive clarity are physiologically incompatible.

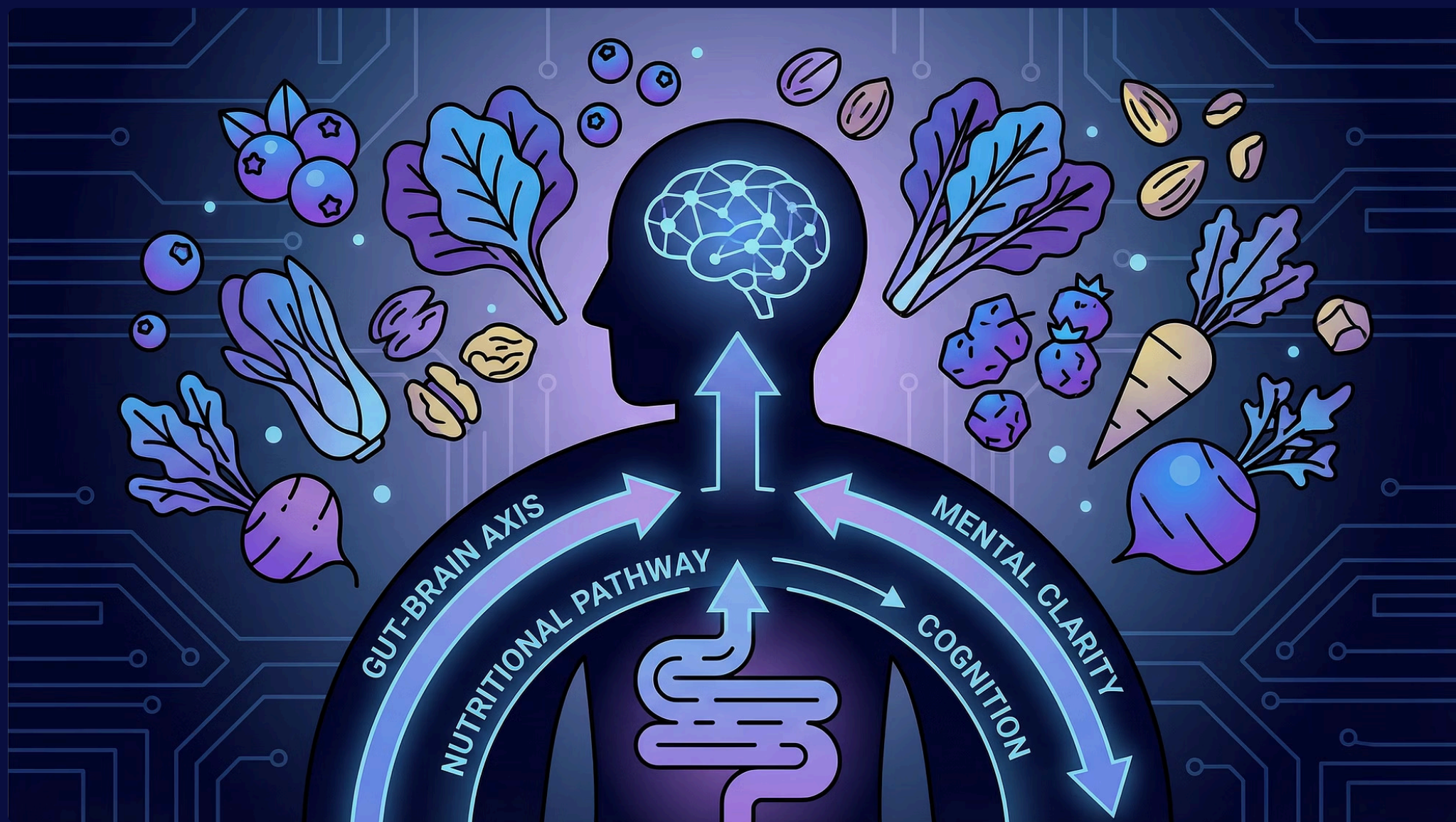
What Survival Mode Does

When your nervous system prioritizes threat scanning, urgency, control, and catastrophic projection, intuition gets systematically quieter. Sleep becomes lighter, digestion gets disrupted, attention fragments, and you lose access to the subtle signals that guide wise decision-making. Your body literally shuts down non-essential functions—and nuanced perception is considered "non-essential" when you're in danger.

Diet, Gut Health, and Intuitive Clarity

Does diet affect intuition? The science says: indirectly, yes—and powerfully. Your diet impacts blood sugar stability (affecting mood and mental clarity), inflammation signaling throughout your body, gut-brain messaging via the vagus nerve, and sleep quality, which directly affects melatonin rhythm and nervous system restoration.

Scientific literature shows that nutrients contribute to the serotonin-to-melatonin synthesis pathway, suggesting dietary intake can significantly influence sleep and mood regulation. The gut-brain axis is now recognized as a major regulatory pathway affecting behavior, stress responses, and emotional balance.



53%

U.S. Adult Diet

Percentage of calories from ultra-processed foods (CDC/NCHS data)

61.9%

Youth Consumption

Percentage of youth calories from ultra-processed sources

80%

Processing Impact

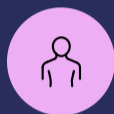
Reduction in nutrient density from whole to processed foods

So if you feel "foggy," "anxious," or "disconnected," it's not just spiritual—it's environmental and physiological. What did ancient cultures say? In India, the Bhagavad Gita and yogic traditions associated "sattvic" foods with promoting vitality, health, and satisfaction—explicitly linking food quality to mental clarity. Traditional Chinese medicine explicitly connects emotional balance with organ systems, where digestive resilience and mental clarity are deeply intertwined. The teaching bridge: Ancients didn't separate spirituality from digestion. Modern science is circling back to the same truth through the gut-brain axis.



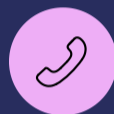
Your Practice: Building Signal Inside the Noise

Four Assignments to Strengthen Your Intuitive Channel



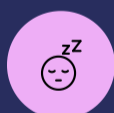
Body Scan + Decision Log

3 minutes daily. Track heart/belly sensations with low-stakes decisions. Time to results: 7-10 days for reliable patterns.



24-Hour Digital Detox

One full day away from screens (modified version allowed for essential calls). Time to results: same-day relief; stronger clarity after 2-3 cycles.



Sleep Journal

7 consecutive days tracking bedtime, wake time, quality, and morning clarity. Time to results: often within 72 hours—sleep is the intuition amplifier.



Still Mind + Image Stream

10 minutes daily for 10 days. Theta-training protocol: breathe, clear mind, watch for images, journal without judgment.

Your Final Integration Question

What is one "noise source" you will reduce this week—light at night, doom scrolling, processed food, constant multitasking? And what is one "signal source" you'll increase—sleep discipline, still mind practice, body scan, morning sunlight—so your intuition has room to speak?

**Your body is not in the way of your intuition.
Your body is the instrument your intuition plays.**

When the world is loud—politics loud, economy loud, screens loud, food loud—your spiritual practice is not escaping reality. It's building signal inside reality.